



**17250 Twin Lakes Road NW
Elk River, Minnesota, 55330**

(763) 260-8864

www.nsresidential.com



COACHMAN RIDGE

17250 Twin Lake Road NW
Elk River, Minnesota, 55330



Getting There

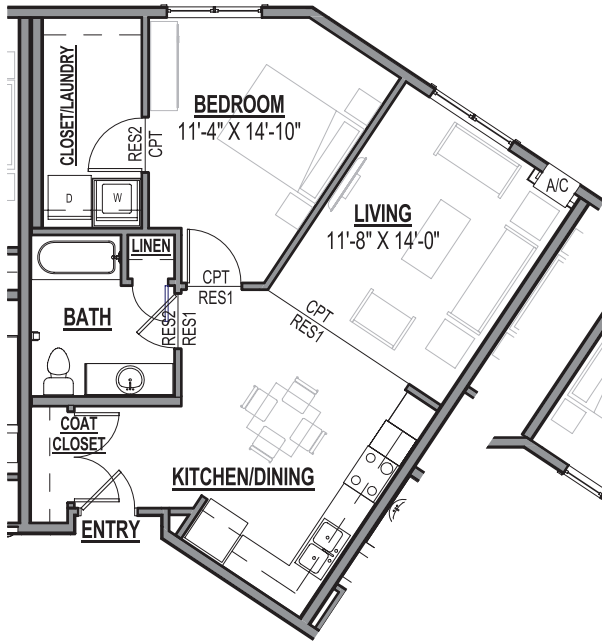
From Hwy 10/169 exit onto 171st Avenue NW and go east. This road turns into Twin Lakes Road. Follow Twin Lakes Rd to the signs for the rail station and turn left. Coachman Ridge will be on your right.



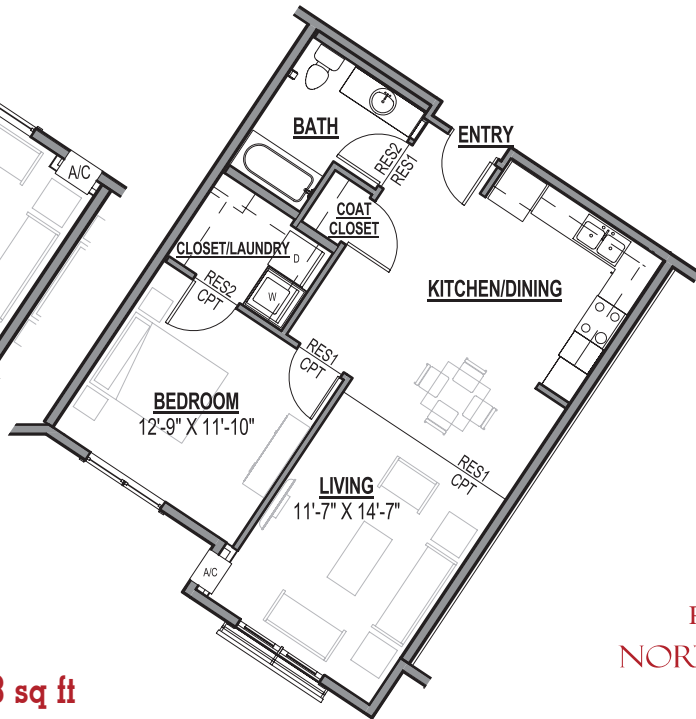
APARTMENT FEATURES

- Spacious 1, 2 and 3 Bedroom Apartments
- Two Bathrooms in 2 and 3 Bedroom Homes
- Heat Included
- Washer and Dryer in Each Home
- Fully Equipped Kitchen
- Window Treatments Provided
- Generous Closets
- Underground Parking
- Smoke Free Community

1 BEDROOM, 1 BATH 701 sq ft



1 BEDROOM, 1 BATH 738 sq ft



BUILDING AMENITIES

- Elevator
- Business Center
- Exercise Facility
- Community Room
- Onsite Play Area

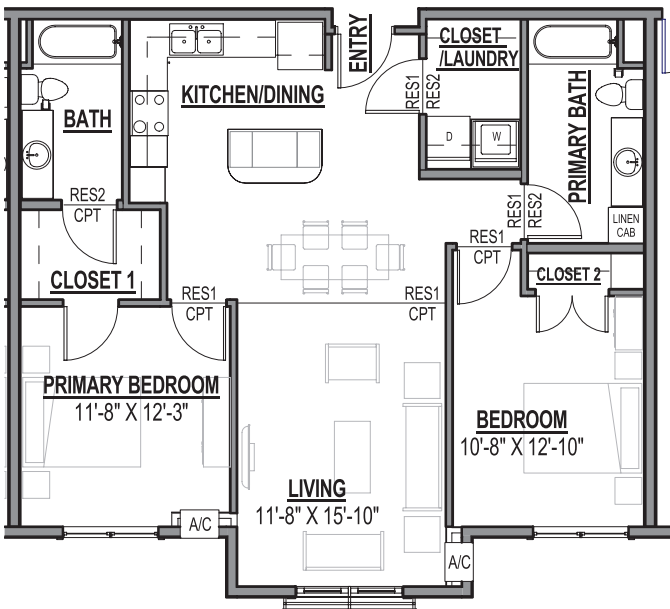


Professionally Managed By:

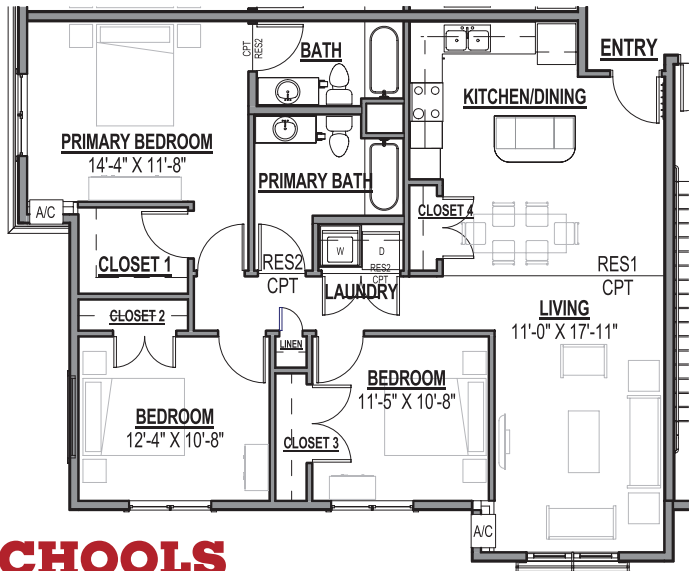
NORTHSTAR RESIDENTIAL

www.nsresidential.com

2 BEDROOM, 2 BATH 1018 sq ft



3 BEDROOM, 2 BATH 1242 sq ft



THE COMMUNITY

- Steps to Northstar Commuter Rail Line
- Great Access to Highways 10 and 169
- Close to Shopping and Conveniences

THE SCHOOLS

- Twin Lakes Elementary
- Salk Junior High
- Elk River Senior High