



10653 172nd Avenue N.W.
Elk River, Minnesota, 55330

(763) 441-5445

www.nsresidential.com



The Depot at Elk River Station
10653 172nd Avenue N.W.
Elk River, Minnesota, 55330



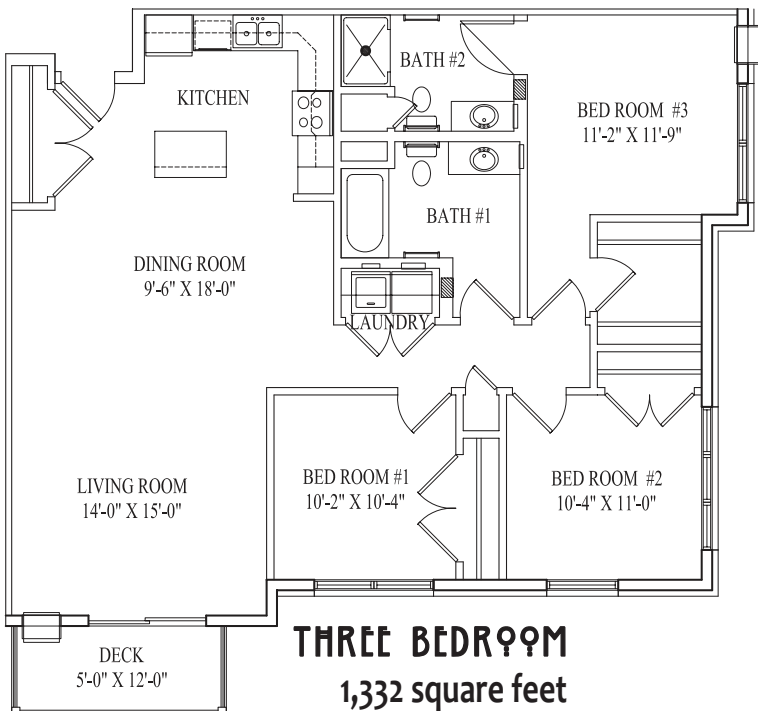
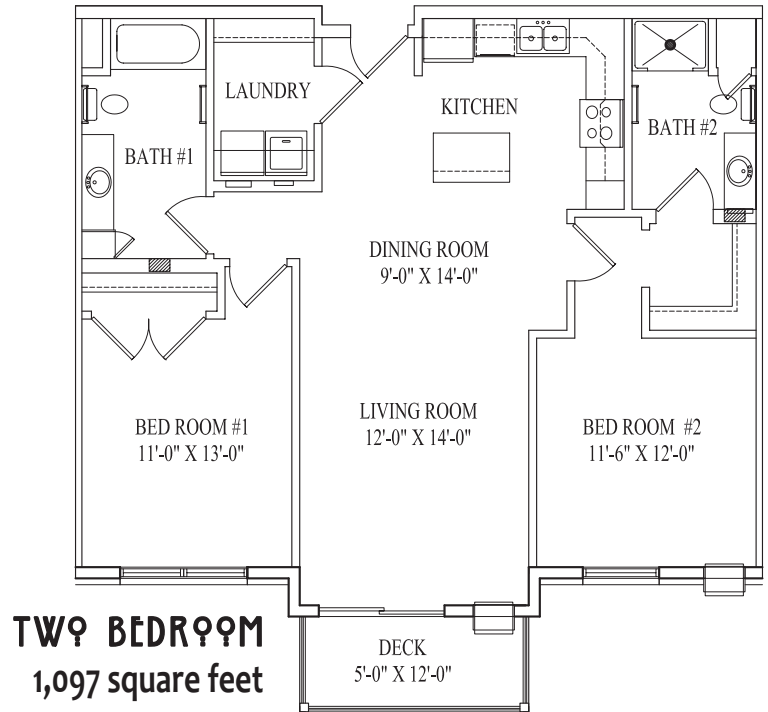
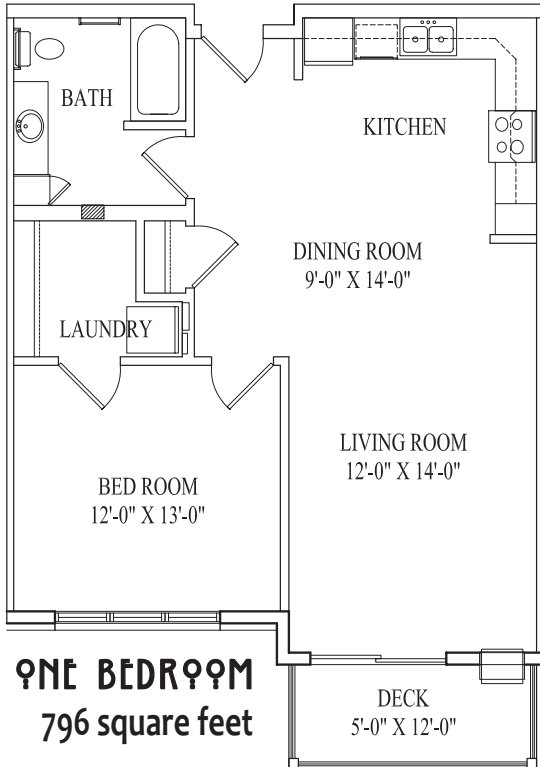
GETTING THERE

From Hwy 10/169 exit onto 171st Avenue NW and go east. This road turns into Twin Lakes Road. Follow Twin Lakes Rd to 172nd Ave NW and turn right. The Depot at Elk River Station will be on the left.



APARTMENT FEATURES

- ♀ Spacious 1, 2 and 3 Bedroom Apartments
- ♀ Two Bathrooms in 2 and 3 Bedroom Homes
- ♀ Heat Included
- ♀ Washer and Dryer in Each Home
- ♀ Fully Equipped Kitchen
- ♀ Window Treatments Provided
- ♀ Generous Closets
- ♀ On-Site Play Area
- ♀ Underground Parking
- ♀ Most Homes are Smoke Free



BUILDING AMENITIES

- ♀ Elevator
- ♀ Guest Suite
- ♀ Business Center
- ♀ Exercise Facility
- ♀ Community Room

THE COMMUNITY

- ♀ Steps to Northstar Commuter Rail Line
- ♀ Great Access to Highways 10 and 169
- ♀ Close to Shopping and Conveniences

THE SCHOOLS

- ♀ Twin Lakes Elementary
- ♀ Salk Junior High
- ♀ Elk River Senior High



Professionally Managed By:
NORTHSTAR RESIDENTIAL

